



Rhode Island Judiciary

2007 ANNUAL REPORT

LETTER OF TRANSMITTAL

To the Honorable Members of the General Assembly:

I am pleased to present to you the 2007 Annual Report of the Rhode Island Judiciary, pursuant to G.L. 1956 (1997 Reenactment) § 8-15-7.



In 2007, we opened our new Rhode Island Traffic Tribunal in Cranston, and it is a shining example of what this administration envisions for our Judiciary across the board in terms of accessibility. This facility not only has free parking and is more user-friendly than its predecessor, but it provides a more professional setting for our employees and the employees of other departments of state government that have offices there.

Our court employees are committed to helping the public understand our procedures. They work tirelessly to carry out the promise of justice for all.

The year 2007 also brought the first move toward electronic filing of all documents in our state court system. When it is implemented in 2011, it will streamline operations, making for a more efficient and effective record-keeping system, and it will make court documents more accessible to the public.

I hope you will find the court overviews and statistics within these pages a helpful accounting of the valuable work that our judicial employees do every day for the citizens we serve.

Yours sincerely,

A handwritten signature in black ink, which appears to read "J. Joseph Baxter, Jr." The signature is written in a cursive, flowing style.

J. Joseph Baxter, Jr.
State Court Administrator

The Rhode Island Judiciary's court facilities, clockwise from top left: Kent County Courthouse, Warwick; Rhode Island Traffic Tribunal, Cranston; Licht Judicial Complex, Providence; McGrath Judicial Complex, South Kingstown; Fogarty Judicial Building, Providence; Murray Judicial Complex, Newport; Garrahy Judicial Complex, Providence.

LETTER TO THE GENERAL ASSEMBLY

To the Honorable Members of the General Assembly:

It is with great satisfaction that the State Court Administrator and I present to you the 2007 Annual Report of the Rhode Island Judiciary. Within these pages are highlights from the six courts of our unified state system, as well as the caseloads and statistics that document our work. As I said to the General Assembly during my 2008 State of the Judiciary address, behind every case, behind every statistic, there is a face, and we never forget that.



From Woonsocket to Westerly, Warren to West Greenwich, each day thousands of families, businesses, and individuals from your communities turn to our courts to resolve civil disputes, respond to criminal complaints, and settle important financial matters. Our high-volume courts regularly help the most vulnerable in our communities, such as battered women seeking protection orders, abused and neglected children, and victims of vandalism and theft. Economic growth and stable business relationships are dependent on a justice system that is working at its best.

We have consistently kept our spending within our budget. We have not sought a supplemental budget allocation for six straight years, but rather have lived within our appropriation. This branch of government constitutes just 1.4 percent of the entire state budget, which is less than the national average.

The beneficiaries of all that we do, and all that you do for us, are your constituents – the people we serve – who count on an efficient and effective court system. Thank you for your ongoing support of our mission to deliver access to justice to the people.

Yours sincerely,

A handwritten signature in cursive script that reads "Frank J. Williams".

Frank J. Williams
Chief Justice

TABLE OF CONTENTS

Letter of Transmittal	i
Letter to the General Assembly	ii
Table of Contents	iii

JUDICIAL PERFORMANCE

Judicial Technology Center	2
Interpreters	3
State Law Library	4
Judicial Education and Mandatory Continuing Legal Education	5
Rhode Island Supreme Court Judicial Records Center	5

THE COURTS

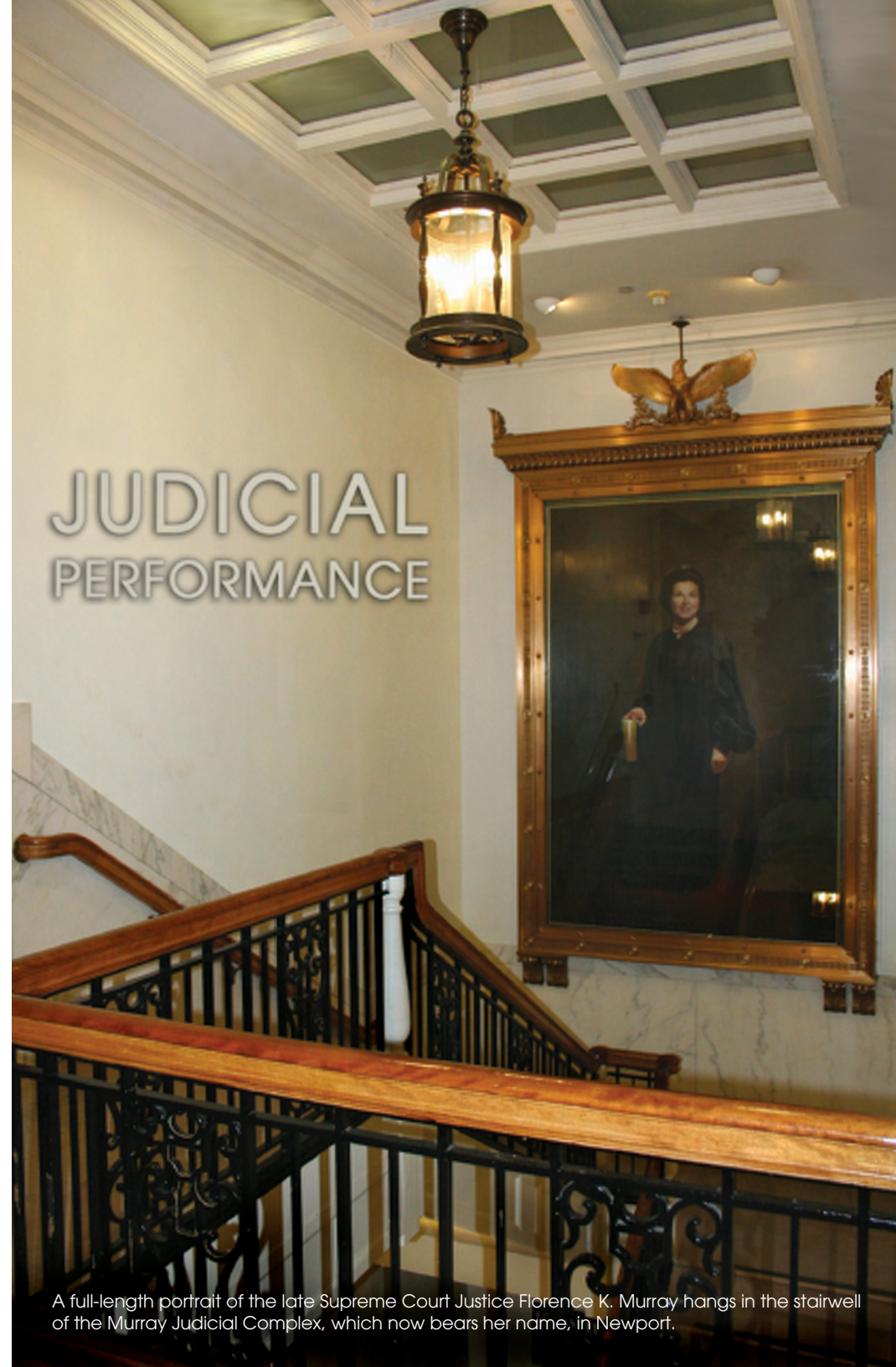
Supreme Court	8
Superior Court	10
Family Court	12
District Court	14
Workers' Compensation Court	16
Rhode Island Traffic Tribunal	18

COURT STATISTICS

At a Glance	22
Judiciary's Caseload Summary	23
Statistical Tables for all Courts	24
Court Structure	42

RHODE ISLAND JUDICIARY
250 Benefit Street
Providence, Rhode Island 02903
(401) 222-3266
www.courts.ri.gov

JUDICIAL PERFORMANCE



A full-length portrait of the late Supreme Court Justice Florence K. Murray hangs in the stairwell of the Murray Judicial Complex, which now bears her name, in Newport.

JUDICIAL TECHNOLOGY CENTER

The Judicial Technology Center (JTC) continues to be extremely busy. While in previous years the staff has been focused on conversions of the courts' computer system and decommissioning of ancient hardware and software, 2007 focused on upgrading the infrastructure components and implementing new technologies. The following presents more detail of all of these accomplishments.

Upgrade of Key Infrastructure Components

The rollout of the dedicated fiber optic ring for judicial facilities was completed during the past year. The ring provides for a faster, more stable communication medium and is the backbone that connects all the data centers in the Judiciary. During 2007, JTC personnel upgraded the back-end servers to faster, more stable UNIX platforms. This allows the Judiciary to begin a server consolidation project in the years to come, thereby eliminating many single servers and allowing more flexibility in rolling out new software.

Electronic Filing

With the conversion of the Wang system to the ACS case management system, the Rhode Island Judiciary is set to move forward to a paperless operation. The United States District Court for the District of Rhode Island, the United States Bankruptcy Court in Rhode Island, and several states are currently using an electronic filing system for part or all of their court business. Many other states are in the implementation phase. Although this goal will take four years to achieve, the first step in this process is to implement an electronic case filing system. Therefore, in 2007 an Electronic Case Filing Task Force was established to begin this much-needed project and to continue the Judiciary's quest for technological advancement. The mission of the Electronic Case Filing Task Force is to provide the guidance, support, and direction to implement a fully functioning, statewide electronic filing system for all courts.

The benefits of electronic filing can be categorized into three areas – timeliness, efficiency, and cost savings. In order to fully realize these benefits, the integration of case and document management is crucial. Electronic payment is also a key integration point for further success in this project. The volume of cases filed throughout the Judiciary presents a significant opportunity to decrease costs to the courts, the Department of the Attorney General, the Public Defender's Office, and private attorneys, while drastically improving the overall efficiency and accuracy of case filing and data by implementing electronic filing.

Digital Recording

The past year has also seen the introduction of digital recording technologies to several courtrooms. All of the courtrooms in the Rhode Island Traffic Tribunal have been outfitted with the latest in digital recording technology. Likewise, all of the grand jury rooms now have these recording devices. Digital recording is important for a number of reasons. First, the medium used preserves a higher quality voice record of the proceedings. Second, it will not deteriorate over time as the older analog technology. Third, specific areas of testimony can be isolated for playback. Fourth, the full record of the proceeding can be "attached" to the case management record. Finally, duplication of these new recordings is as simple as burning a CD on a computer. It is anticipated that in the next three years all courts will be retrofitted with this technology.

Second Edition of the Technology Plan Published

In 2007, the JTC staff took a step back from the day-to-day endeavors to think of the future and what ideas and technologies were needed to meet the ever growing demands of the Judiciary. From those sessions, the second edition of the technology plan was published. The plan clearly outlines the strategic direction of the JTC and the technologies necessary to be a success.

Collections

In 2007, the Judiciary for the first time enrolled with the state Division of Taxation to intercept income tax refunds headed toward people who owe the Judiciary money. The Judiciary collected \$202,845.58 in 2007 from the tax intercept program. The JTC has also collected \$92,543.00 in data sales and reports.

INTERPRETERS

The Office of Court Interpreters (OCI) had another successful and productive year. The OCI served 6,150 individuals, which represents a 100 percent increase compared to last year. The OCI provided interpreting and translation services in a wide variety of settings from interpreting defendants' rights to arraignments, pre-trial conferences, bail hearings, divorces, etc. It also provided tape transcription and translation when requested by the courts. In the last quarter of 2006, a daily interpreter was assigned to the Kent County Courthouse to ensure that cases transferred from the Garrahy Judicial Complex would continue with the use of an interpreter.

This year, the OCI gave two presentations: one at the Rhode Island Bar Association Annual Meeting and the second one for new lawyers. Both presentations dealt with diversity and interpreter use in the courts. The OCI continued contributing and participating in the Supreme Court Permanent Advisory Committee on Women and Minorities in the Courts as well as translating court forms as needed.

STATE LAW LIBRARY

In 2007, the State Law Library was marked by outreach to the student and library community, difficult budget decisions, the promise of infrastructure improvement, and a continued commitment to excellence in providing legal research services and resources.

The library is a recipient of a 2007 grant from the Champlin Foundations. These monies will be used for infrastructure improvement, digitization programs as well as library cooperation. Funding for electrical upgrades, stack enhancement, and ADA compliant signage will assist the library in modernizing its systems and improve accessibility while preserving and protecting its historical heritage.

Funding for digitization of many of the library's rich and varied collections is also included in the Champlin Foundations grant. Plans are underway to digitize a photograph collection, many of the library's unique state documents, and historical Rhode Island statutes and cases. Digitization of these collections will make the past more richly documented, more accessible, and more responsive to future researchers.

In 2007, the library participated in the Legislative Commission to Study the Strengths and Weaknesses in Libraries (Karla Harry Commission on Libraries). The State Law Library was an integral member of the Database Working Group that advocated for a core collection of statewide databases for all Rhode Islanders. As part of the Champlin Foundations grant, the library is pursuing a partnership with the HELIN Consortium, a step that will bring the libraries of Rhode Island one step closer toward the reality of a Rhode Island Statewide Catalog.

The library continued to partner with the Office of Community Outreach and Public Relations in its Justice Rules program. Students of all ages tour the Licht Judicial Complex and are introduced to the library. These sessions provide the library with the opportunity to showcase its unique resources and enrich the lives of the students. During the school year, the library hosts students of all age levels on an average of one or two times per week. The goal of this collaboration is to present the library to students as a place where problems are solved, puzzling questions are answered, and justice is served.

JUDICIAL EDUCATION AND MANDATORY CONTINUING LEGAL EDUCATION

The year 2007 marked the long-awaited integration of the Mandatory Continuing Legal Education (MCLE) database with the attorney registration database. The emergence of the Judiciary's case management system now allows the office to interface with the most current and accurate attorney registration information.

Attorneys are now permitted to complete a maximum of three credits per year through online and distance-learning modalities, an expansion of educational access. Many of the Supreme Court's 240 accredited sponsors offer distance learning that includes web casting, satellite broadcasts, and teleconferencing. This option allows for greater convenience, lower tuition, and wider access to nationally ranked speakers on diverse areas of law practice.

In-house judicial conferences offered throughout the year focused on a wide range of timely topics including bio-ethics and the human genome, the impact of advances in technology, eyewitness identification, and criminal and civil case law updates. All state court justices, judges, and magistrates attended the conferences.

The work of the Rhode Island Supreme Court MCLE Commission and its Executive Director was honored with their selection to design a national Continuing Legal Education summit scheduled for 2009. Holly Hitchcock, M.Ed., was appointed to the steering committee in November 2007. This summit will bring together approximately 150 national leaders in the field of legal education to quantitatively and qualitatively examine the scope and trends in educating lawyers from law school through retirement.

JUDICIAL RECORDS CENTER

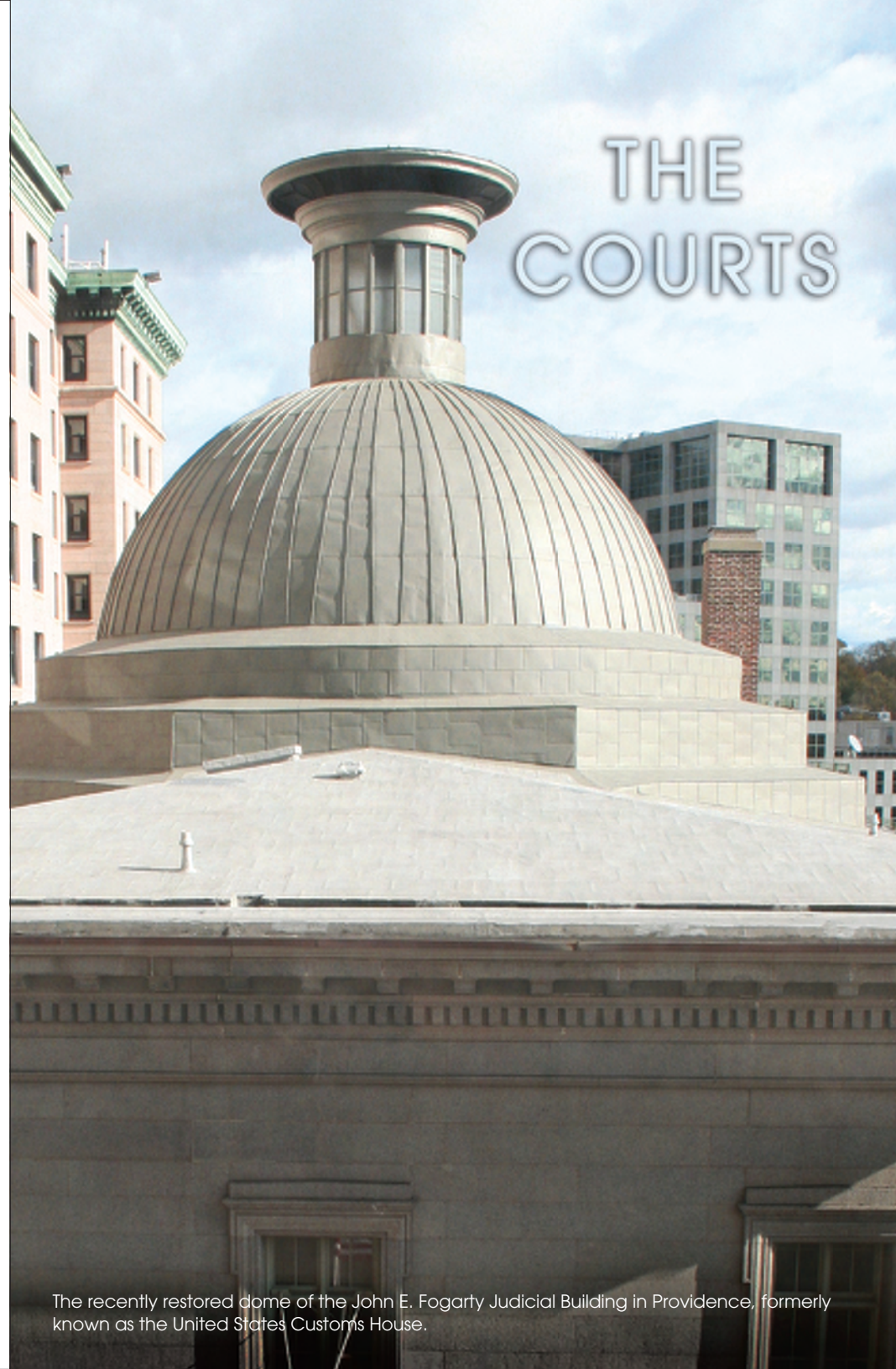
The Judicial Records Center (JRC) provides secure storage for the semi-active, inactive, and archival records of the Rhode Island Judiciary. The JRC also provides efficient reference services for the courts, attorneys, and members of the public who require court records for research purposes.

In 2007 the JRC received 258,020 case files in 7,052 boxes. The JRC now stores more than 4,514,300 case files in 80,191 cubic foot boxes and 5,124 manuscript

court docket, minute, and record books. The staff responded to over 108,890 requests for records during the year. These included more than 31,000 individual records that were viewed at the JRC. Staff also provided access to an additional 58,000 case files for researchers for credit agencies and social policy institutes.

The number of archival requests increased to 9,762. The archives staff is also working on completing a database of all of the 18th-century court cases. A number of graduate students are conducting research in the archival court records, and the number of publications based on these records continues to grow. Professor Ellen Hartigan-O'Connor published '*She Said She did not Know Money: Urban Women and Atlantic Markets in the Revolutionary Era in Early American Studies: An Interdisciplinary Journal*, Volume 4, Issue 2, pp. 322-353. Based largely on the civil court records of Colonial Newport, this article argues that women in the urban ports of Colonial America were central to an Atlantic service economy. Professor Hartigan-O'Connor elaborates on this thesis in her book, *The Ties That Bind: Women's Economic Lives in Revolutionary Port Cities* (University of Pennsylvania Press, 2008, forthcoming.)

In news about previously published works, the American Historical Association awarded Professor Mary Sarah Bilder the Littleton-Griswold Prize for the best book on the history of American law and society for her book *The Transatlantic Constitution: Colonial Legal Culture and the Empire* (Harvard University Press). In announcing the award, the American Historical Association wrote that Bilder's book "brilliantly challenges the orthodoxy that until 1763 English authorities ignored American Colonial law. Focusing on the actual practice of imperial law through 17th- and 18th-century Rhode Island, Bilder argues that legal and political dialogues created a dynamic imperial constitution out of tensions between adherence to English law and acceptance of local deviations not repudiating English law. London then precipitated the Revolution by resolving tension between the two principles in favor of more uniform English law." The Rhode Island Judiciary is pleased to have provided Professor Bilder the documentary evidence that enabled such a groundbreaking work.



The recently restored dome of the John E. Fogarty Judicial Building in Providence, formerly known as the United States Customs House.



The Rhode Island Supreme Court, with Chief Justice Frank J. Williams, seated, and standing, left to right, Justice Francis X. Flaherty, Justice Paul A. Suttell, Justice William P. Robinson III, and Justice Maureen McKenna Goldberg.

SUPREME COURT

Community Outreach and Public Relations

The Office of Community Outreach and Public Relations strengthened its ties with the Rhode Island Department of Education's network of school-based coordinators to enhance its court education program in the schools. To make its "Justice Rules" curriculum more applicable to today's classroom, the office sponsored a middle school social studies teacher in a summer externship to align the curriculum to state and national education standards.

Rhode Island Grade Span Expectations for Government and Civics and Historical Perspectives/Rhode Island History were developed to identify the content knowledge and skills expected of all students. The "Justice Rules" lessons were aligned to those expectations as well as the National Standards for Civics and Government (Center for Civic Education 1994) and Expectations of Excellence (Curriculum Standards for Social Studies; National Council for Social Studies 1994).

The "Justice Rules" program continued to use lawyers, judges, and court staff to teach elementary and secondary students about the basic principles of the legal system,

to cultivate positive attitudes about the third branch of government, and to promote interest regarding careers in the Judiciary. It has reached thousands of students through such programming as well as high school career fairs and courthouse tours, which are very popular.

In its fourth year, the Chief Justice's "Citizens' Summit" television program on Rhode Island's Public Broadcasting Service channel educated viewers on the new Rhode Island Traffic Tribunal, the Office of Court Interpreters, and the Adult Drug Court.

The Supreme Court continued its twice yearly practice of "riding the circuit" to conduct oral arguments of actual cases in the outlying cities and towns. In 2007, the court sat in Bristol at Roger Williams University School of Law and in South Kingstown at South Kingstown High School.

Appellate Mediation Program

The Appellate Mediation Program was proud to maintain its resolution rate of close to 60 percent for the third year in a row. Appellate Mediation expanded its operations to two new locations – the Kent County Courthouse in Warwick and the Rhode Island Traffic Tribunal in Cranston. Based on the anonymous surveys that were distributed to participants, the program continued to have a high satisfaction rate both overall and with individual mediators.

Law Clerk Department

For 2007, the Law Clerk Department had another productive year. The department of 15 law clerks, one fewer law clerk than the previous year, worked on approximately 175 draft decision assignments. An additional law clerk was assigned to the Kent County Courthouse to handle the increased workload and to assist the law clerks in the counties.

Overall, the law clerks provided legal research and writing assistance to the general trial calendar, encompassing civil, criminal, and administrative matters. Most importantly, law clerk industriousness and collaboration effectively precluded any significant backlog of assignments.

The Department's overall goal is twofold. The Law Clerk Department strives to maintain a well-trained staff of law clerks to assist the Judiciary with legal research and writing requests. At the same time, the Department endeavors to enable new attorneys to learn about the court system.



Row 1 (Bottom) - Left to right: Michael A. Silverstein, Francis J. Darigan, Jr., Mark A. Pfeiffer, Melanie Wilk Thunberg, Alice Bridget Gibney, Joseph F. Rodgers, Jr. (Presiding Justice), Robert D. Krause, Vincent A. Ragosta, Patricia A. Hurst, Judith C. Savage, and Stephen J. Fortunato, Jr. Row 2 - Left to right: Gordon M. Smith, Patricia L. Harwood, William J. McAtee, Jeffrey A. Lanphear, Susan E. McGuirl, Stephen P. Nugent, O. Rogeriee Thompson, Netti C. Vogel, Edward C. Clifton, William A. Dimitri, Jr., Gilbert V. Indeglia, Edwin J. Gale, Daniel A. Procaccini, Allen P. Rubine, Joseph A. Keough, and Susan L. Revens.

SUPERIOR COURT

Medical Malpractice Mediation

As part of a joint project with the Superior Court Bench/Bar Committee of the Rhode Island Bar Association, the Superior Court in October 2005 instituted a mandatory mediation program for all medical malpractice actions pending trial in Providence County Superior Court. The cooperation of litigants and members of the bar representing both plaintiffs and defendants has been extraordinary. Mediation sessions have been held each week. In September 2007, the mandatory mediation program was extended to include cases filed in Kent, Washington, and Newport Counties.

In the last two weeks of January 2007, 68 pending cases were mediated. Of those cases, 21 were settled during mediation and 33 resulted in an impasse. The remaining 14 cases are currently pending further mediation on a later date. Of the cases left in impasse, 5 were settled prior to trial, 11 have been scheduled for trial later in 2008, and one case was tried to a substantial verdict for the plaintiff in November 2007.

The Business Calendar

Now in its seventh year, the Superior Court Business Calendar continues to be an efficient alternative for more complex business cases. The expeditious manner in which these cases are now handled has been a great benefit to the litigants as well as the business community. Since the first day of the program, 706 cases have been assigned to the Business Calendar. A total of approximately 400 have been disposed, with approximately 325 cases pending.

Gun Court

The Rhode Island Gun Court, which heard its first case on September 12, 1994, has been a tremendous success, emulated by as many as 20 other jurisdictions. The dramatic impact on the prosecution of gun crimes is seen in the reduction of the disposition rate for these cases, from an average of 18 months to merely four months from time of filing a case. In calendar year 2007, 170 cases were disposed on the Gun Court calendar, with an average disposition rate of 203 days. In addition, 1,212 jail terms have been imposed since the program's inception and 83 percent of cases result in the imposition of a sentence.

Adult Drug Court

In 2007, the Adult Drug Court continued to develop from a pilot initiative to a full-time program with over 90 active participants. For the past three years, the court has heard cases in the counties of Kent, Washington, and Newport. Conducting case reviews in the county courthouses has enabled the Adult Drug Court to offer the services that the program provides to eligible persons facing criminal charges statewide.

For the Rhode Island Adult Drug Court, its six years of operation have resulted in impressive and measurable success in changing the course of many lives that may have otherwise have been lost to a lifetime of drug or alcohol addiction. Defendants have successfully matriculated through the program resulting in over 100 participants having graduated by compliance with the rigid terms and conditions enumerated in the Adult Drug Court Contract.

The Sexually Violent Predator Calendar

Presiding Justice Joseph F. Rodgers, Jr. established a separate calendar to hear sexually violent predator determinations as well as community notification issues relating to sexual crimes. The Superior Court is hearing both types of cases.

In sexually violent predator determinations, the Department of Attorney General files a petition on behalf of the State seeking a court determination of the "sexually violent predator" status of a defendant who has been convicted of one of the statutorily designated crimes. The court must render its decision with the assistance of a report from the Board of Review of Sexually Violent Predatory Behavior. During the year 2007, the court handled 41 of these cases. Since its inception, 232 cases have been filed on this calendar.



Row 1 (Bottom) - Left to right: Howard I. Lipsey, Michael B. Forte, Pamela M. Macktaz, Jeremiah S. Jeremiah, Jr. (Chief Judge), Haiganush R. Bedrosian, Raymond E. Shawcross, and Kathleen A. Voccola. Row 2 - Left to right: Mary McCaffrey, Laureen D'Ambra, Francis J. Murray, Jr., John A. Mutter, Gilbert T. Rocha, Stephen J. Capineri, and Debra E. DiSegna. Row 3 - Left to right: Edward H. Newman, Jeanne L. Shepard, George N. DiMuro, John J. O'Brien, Jr., Angela M. Paulhus, Thomas Wright, and Patricia K. Asquith.

FAMILY COURT

Domestic Case Flow System

Chief Judge Jeremiah S. Jeremiah, Jr. has made certain modifications and adjustments for divorce filings in the domestic case flow system. First, the amount of time for the court to hear and decide a nominal divorce proceeding has been decreased to 70 days from 77 days. Second, the contested calendar case flow has been streamlined.

The case management conference was replaced with a case status conference. Once the case status conference is complete, the matter is immediately referred to the continuous contested trial calendar for a pretrial conference. Additionally, the parties are required to follow prescribed time lines for discovery and memoranda. The trials are heard on a continuous daily basis until complete.

Child Protection Calendars

The child protection calendars have also seen several changes. Chief Judge Jeremiah created a task force to review the efficiency of cases being heard by the child protection judges. As a result, the calendars were modified to provide for an a.m./p.m. calendar. This calendar is time specific for each respective court event, thus reducing valuable resources for litigants and agency personnel awaiting a court hearing. Also, each judge on the calendar receives a designated trial week. The arraignments on this calendar will be coordinated for time specific events to accommodate social workers and respondents who are being transported from the Adult Correctional Institutions.

The Mental Health Clinic

The Mental Health Clinic has afforded the Family Court the opportunity to appropriately address the complexity of issues that are presented. With this specialized program, the children and families that have been diagnosed with or are believed to have mental health issues receive timely assessments that enable the Family Court to make a determination based on clinical information that was previously unavailable. Prior to the implementation of the Mental Health Clinic, young people with suspected mental health needs were referred to counseling service agencies in the community.

The Mental Health Clinic provides rapid assessments and evaluations with on-site capability for professional screening, referral, in-depth assessment in outpatient and residential settings, timely reporting of treatment recommendations to the court, and treatment and case management of both the child and family service needs. To date, the Mental Health Clinic has seen a total of 222 juveniles. By the end of 2007, the Mental Health Clinic has seen a total of 251 juveniles. In addition to our standard evaluations, five clinicians have performed 73 consultations (by telephone or in-person) with judges or magistrates. Evaluations have been conducted on juveniles from the ages of 11 to 17 years of age, with the average age being 15 years old (30.6 percent), with 64.5 percent of the juveniles residing in Providence County.

The Family Treatment Drug Court

The Family Treatment Drug Court (FTDC) program has had 276 adults (227 moms; 49 dads) and is looking forward to increasing this number as we enter our seventh year. Over 100 participants have graduated. Currently, there are 41 active participants. We have serviced 226 newborns; 161 older children (with juvenile ids.) We have celebrated the graduations of numerous fathers who successfully completed the program resulting in a reunification with their child(ren). Also, we have had four to five mothers in this specialized court give birth to drug-free babies, including one set of twins, and we have graduated a number of couples.

Our evaluator for this program, the National Perinatal Information Center, has found "the average time to first reunification for the FTDC participants was significantly less – 73 percent of infants of mothers participating in the FTDC were returned within the first three months, compared to 39 percent of infants with mothers served through the standard court calendar." The intensive court supervision, along with court-ordered substance abuse treatment services and other ancillary services, allow participants to deal with their problems, keep their children (or work toward reunification), and learn the skills to move on to a healthy, drug-free future.



Row 1 (Bottom) - Left to right: Walter Gorman, Michael A. Higgins, Albert E. DeRobbio (Chief Judge), Stephen P. Erickson, and Frank J. Cenerini. Row 2 - Left to right: Christine S. Jabour, Raphael Ovalles, Jeanne E. LaFazia, Madeline Quirk, Elaine T. Bucci, William Clifton, and Joseph P. Ippolito, Jr.

DISTRICT COURT

In 2007, the District Court experienced a 20 percent turnover of its judicial officers through death or retirement.

The court was saddened by the passing of Associate Judge Richard A. Gonnella, 61, in May. Judge Gonnella was appointed to the bench in 2000. He was known for his knowledge of criminal law and procedure and his courtesy to the lawyers and parties who came before him. District Court Chief Judge Albert E. DeRobbio described Judge Gonnella as “one of our finest jurists. He was very knowledgeable in the law and very compassionate in how he dealt with people. He was a man of great faith, a decent, honest, moral, ethical person.”

At the time of Judge Gonnella’s appointment, he had been in private law practice and was legal counsel to the Senate Judiciary Committee. As a private lawyer, he concentrated on criminal defense in both the state and federal courts. He was an assistant public defender for three years, beginning soon after he graduated from law school.

The summer of 2007 brought the retirement of Associate Judge Patricia D. Moore, the third-most senior member of the District Court bench. Judge Moore served for 20 years. A graduate of Wellesley College and the second woman appointed to the court, Judge Moore stated that she enjoyed serving on the District Court because it was fast-paced and there was a lot of variety, from bail hearings on murder cases to small claims cases involving little money. She added, “I felt I was in a position to help people, particularly those with mental health or substance abuse issues.” Assisting the court as a retired judge, she enjoys traveling with her husband and is taking piano and French lessons. Not surprising to those who know Judge Moore, she is actively seeking out opportunities to do volunteer work.

Associate Judge John M. McLoughlin announced his retirement in the fall. Prior to being appointed to the bench in 1994, he had a private law practice and was an assistant attorney general. Judge McLoughlin had a total of 31 years of state service. He served on calendars throughout the state. Judge McLoughlin is known to be a proud graduate of Boston College and relishes the success of the Eagles sports teams. He recently commented that the most intriguing facet of his judicial service was the interesting people who came before the court. When not assisting the court as a retired judge, Judge McLoughlin and his wife plan to travel and to spend time with their 12 grandchildren.

Walter Gorman retired in March of 2008 after 15 years as an Associate Judge of the District Court. He came to the District Court from the Department of the Attorney General, where he served as the Deputy Attorney General. After graduation from law school, Judge Gorman was hired by Attorney General Robert F. Kennedy to serve as a trial attorney for the Civil Rights Division of the United States Department of Justice, where he served for many years.

A graduate of Providence College and Boston University Law School, Judge Gorman appreciated fashioning decisions in civil cases and sentences in criminal matters that met the requirements of justice and also met the needs of the parties. He indicated that he gained a deeper appreciation for the role of the court and the bar in our society, especially when endeavoring to resolve cases involving mental health issues.

Judge Gorman, who has been sitting steadily since his retirement, plans to continue to serve Rhode Island as a retired judge for a significant period. He also is considering arbitration and mediation work.



Row 1 (Bottom) - Left to right: Bruce Q. Morin, John Rotondi, Jr., George E. Healy, Jr. (Chief Judge), Debra L. Olsson, and Janette A. Bertness. Row 2 - Left to right: Hugo L. Ricci, Jr., Dianne M. Connor, Edward P. Sowa, Jr., George T. Salem, Jr., and Robert Hardman.

WORKERS' COMPENSATION COURT

Throughout the past year, the Workers' Compensation Court continued to focus upon productivity and education. The judges and staff of the court worked tirelessly to improve case management in order to better serve the litigants who seek their assistance. The court demonstrated consistent improvement in closing each type of petition filed and reduced the time in which all classes of cases are resolved. In addition, representatives of the court have continued and, in fact, expanded their outreach efforts.

For the first time in several years, the number of petitions filed with the court actually decreased. It is interesting to note that this was the first time in the last four years where the ambit of the court's jurisdiction was not expanded by the General Assembly. In recent years, there has been a spike in litigation while the parties to the compensation system became familiar with a new piece of legislation and learned how the court would address the common legal issues which arose. This period of uncertainty typically created a temporary spike in the number of cases filed with the court. In addition, because the court was also wrestling with new legal challenges, the initial time frame to manage a new class of cases was elongated. As both the court and the litigants became more familiar with the substantive and procedural niceties involved in the litigation, the court's efficiency increased.

An analysis of recent legislative developments tends to support this theory. In recent years, the court's jurisdiction was expanded to address litigation between insurers and employers regarding a policy of workers' compensation insurance. The court was charged with the responsibility to address the interests of the Center for Medicare and Medicaid Services when considering petitions for settlement. Finally, the court's jurisdiction in cases involving uninsured employers was greatly expanded and the Department of Labor and Training accelerated its efforts to investigate lack of insurance cases and to punish those employers who fail to maintain a policy of insurance. In each situation, the court was called upon to create a new procedure and to craft substantive remedies for each type of claim. The Workers' Compensation Court has responded to each challenge and has created a body of case law to assist the litigants in managing the new cases.

In 2007, the court consistently improved the time frames in which petitions were concluded. In the past year, the percentage of cases closed at pretrial conference again increased to the remarkable level of 73.6 percent. This is an increase of almost two percent over the prior year and the highest level in the past five years. Perhaps even more noteworthy are the number of cases which were closed at the pretrial level within 30 days of the date of filing. Sixty-four percent of the cases are closed at that stage and almost 90 percent of the cases are resolved within 90 days of the date of filing. The ability to address the cases filed with the court in a timely and efficient manner is probably the single most effective tool in eliminating litigation. The court's success in this area is extremely gratifying. It unequivocally demonstrates commitment by the judges and staff of the Workers' Compensation Court to equitably and efficiently meet the needs of those who seek our assistance.

In 2007, the court's outreach efforts were also remarkable. The YES-RI program sponsored by the court has expanded to meet even more young workers and to educate them about their right to a safe work place. This program teams representatives of the bench and the bar with safety professionals to go out to high schools throughout the state and educate young workers. The program more than doubled its outreach over the past year and the response from the students has been extremely rewarding. They have learned about their rights in an enjoyable, non-threatening program and have expressed a feeling of empowerment. In addition, they were given a graphic demonstration of the Judiciary's commitment to serve them. This dedication to service has been a hallmark of the court over the years and helps the community to understand the depth of the Judiciary's dedication to the citizens who seek our assistance.



Row 1 (Bottom) - Left to right: Lillian Almeida, William R. Guglietta (Chief Magistrate), and Edward Parker. Row 2 - Left to right: Albert Ciullo, Domenic DiSandro, III, and William Noonan.

RHODE ISLAND TRAFFIC TRIBUNAL

E-Citation

The Rhode Island Traffic Tribunal (RITT) has successfully completed an E-citation pilot project. Developed in partnership with the Judicial Technology Center, the State Police, and five local police departments, the E-citation system allows an officer to electronically generate a traffic summons in the patrol vehicle, with summons information for the offender and vehicle backfilled based upon their Rhode Island Law Enforcement Telecommunications System (RILETS) inquiry. The summons is printed in the patrol vehicle and the summons data is electronically transmitted to the court computer system. Validating data at the time of initial issuance improves overall data quality. The electronic citation process increases efficiency in the summoning process, reducing the overall time spent per summons.

All State Police patrol vehicles, as well as patrol vehicles in Burrillville, East Providence, Narragansett, North Kingstown, and Portsmouth have been upgraded to issue E-citation. A total of 27,250 citations were issued during the pilot project. In addition, selected municipal courts are also transmitting summons data to the RITT reducing redundant data entry efforts and increasing efficiency. Overall, 34 percent of all citations added to the RITT case management system were created as a result of the E-citation interface.

The E-citation program also provides important case updates to the participating departments. In calendar year 2007, over 73,000 case updates were sent to police agencies improving the movement toward integrated justice.

The E-citation project is significant not only because of the obvious improvements in accountability and efficiency, but it also marks the first data exchange in the Judiciary using XML for the exchange standard and reinforces the Judiciary's role in the integrated justice system.

Enterprise Content Management Project

The RITT continues to deploy technological innovation in order to provide improved customer service and efficiency. The RITT, in conjunction with the Judicial Technology Center, has initiated an enterprise content management (document management) project using IBM FileNet P8 ECM suite and E-Forms application.

This project encompasses the scanning of traffic citations and supporting documentation into the ECM system improving operational efficiency and customer service by eliminating document filing and retrieval overhead while also protecting the integrity of court documents. E-Forms will be utilized to streamline data entry and position the RITT for Phase 2 of the implementation, which will integrate additional processes and continue progress toward the RITT's vision of a paperless court.

Digital Recording

The RITT has implemented improved digital recording capabilities in its courtrooms. Software and hardware from Jefferson Audio Video (JAVS) has been installed. This specialized court recording software greatly improves recording quality, security, and archival and retrieval capabilities. Improved digital microphones allow litigants to freely present their case to the court while ensuring the audio will be recorded.

COURT STATISTICS



The fifth-floor hallway at the Superior Court in the Licht Judicial Complex in Providence.

AT A GLANCE

Filings/ Hearings.....	224,154
Disposed.....	213,741

FISCAL YEAR 2008 BUDGET - ENACTED

	ALL FUNDS	GENERAL REVENUE
Supreme Court	\$ 28,725,770	\$ 26,022,843
Defense of Indigent Persons	\$ 3,065,689	\$ 3,065,689
Superior Court	\$ 20,953,423	\$ 20,417,996
Family Court	\$ 19,200,772	\$ 17,793,670
District Court	\$ 10,505,649	\$ 10,505,649
Workers' Compensation Court	\$ 7,387,455 (restricted)	\$
Traffic Tribunal	\$ 7,159,070	\$ 7,159,070
TOTAL	\$ 96,997,828	\$ 84,964,917

JUDGES

58 Judges
(7 vacancies)
4 Minorities
18 Female
19 Magistrates
(including 2 vacancies
in Traffic Tribunal)
8 Female

EMPLOYEES

FTE Count = 739.4

FACILITIES

6 Courthouses
81 Courtrooms
(including 4 Grand Jury rooms)

FISCAL YEAR 2007 RECEIPTS - ALL FUNDS

	CRIMINAL/TRAFFIC/JUVENILE		
	Civil	Fines/Fees/Costs	Grants
Supreme Court	\$ 230,363	\$ N/A	\$ 268,031
Superior Court	\$ 1,344,065	\$ 1,767,423	\$ 443,952
Family Court	\$ 520,646	\$ 20,515	\$ 888,332
District Court	\$ 2,037,008	\$ 6,618,558	
Workers' Compensation Court	\$ 162,359	\$ N/A	
Traffic Tribunal	\$ N/A	\$10,769,327	
Total Receipts Generated	\$ 4,294,441	\$19,175,823	\$ 1,600,315
TOTAL RECEIPTS FISCAL YEAR 2007			\$ 25,070,579

JUDICIARY'S CASELOAD SUMMARY

COURT	CASE TYPE	FILING/ HEARINGS	DISPOSITIONS
Supreme Court		358	288
	Appellate Mediation	117	65
Superior Court	Felony	5,946	5,954
	Misdemeanor	287	202
	Civil	9,811	*6,364
Family Court	Juvenile	10,264	11,083
	Divorce	3,878	4,003
	Miscellaneous Petitions	671	
	Abuse	2,233	2,424
	Child Support	**5,442	
	Support Hearings	***26,382	
District Court	Misdemeanors	29,607	28,153
	Small Claims	19,430	19,512
	Civil	22,278	19,201
	Abuse	746	
	Mental Health/Other	566	
	Administrative Appeals	182	
Workers' Compensation Court		8,050	8,276
Traffic Tribunal		104,288	108,216
Total Filings and Dispositions		224,154	213,741
Including Support Hearings		250,536	

* Please note, unlike 2003 and 2004, there was no mass dismissal of cases with no action in five years during 2005, 2006, or 2007.

** Reciprocal filings stay open until age of majority of child unless otherwise ordered by court.

*** Support hearings represent the number of hearings held. Therefore, the same case may be counted more than once.

SUPREME COURT APPELLATE CASELOAD

Criminal	2003	2004	2005	2006	2007
Docketed	64	80	70	64	74
Disposed	80	62	67	71	70
Pending	103	123	134	129	134
Civil	2003	2004	2005	2006	2007
Docketed	195	174	156	157	147
Disposed	207	194	148	155	153
Pending	249	231	236	237	223
Certiorari	2003	2004	2005	2006	2007
Docketed	75	87	87	83	100
Disposed	128	64	73	63	88
Pending	56	80	96	110	96
Miscellaneous	2003	2004	2005	2006	2007
Docketed	339	53	32	37	37
Disposed	299	66	35	31	42
Pending	67	43	34	51	39
All Cases	2003	2004	2005	2006	2007
Docketed	673	394	345	341	358
Disposed	714	386	323	320	353
Pending	475	477	500	527	492

SUPREME COURT MANNER OF DISPOSITION

Before Argument	2003	2004	2005	2006	2007
Withdrawn	105	54	*	57	76
Dismissed	129	64	*	21	37
Petition Granted	129	7	*	4	10
Petition Denied	108	69	*	53	67
Other	32	12	*	17	39
Article 1, Rule 12A - Show Cause Orders	9	13	*		
Total	512	219	*	151	229
After Argument/Merits	2003	2004	2005	2006	2007
Withdrawn	1	3	*	2	1
Affirmed	23	8	*	78	53
Modified	0	0	*	4	3
Reversed	0	0	*	8	12
Other	4	2	*	2	2
Total Orders Per Curiam	28	13	*	38	27
Total	138	100	*	94	71
After Argument/Merits	2003	2004	2005	2006	2007
Withdrawn	0	1	*	6	1
Affirmed	31	43	*	48	31
Modified	12	6	*	1	7
Reversed	21	17	*	20	13
Other					1
Total	64	67	*	75	53
	2003	2004	2005	2006	2007
Total Dispositions	714	386	*	320	353
% Disposed of Within 300 Days of Docketing	63%	46%	*	38%	48%

* not available.

SUPERIOR COURT CIVIL CASELOAD

CIVIL ACTIONS					
Providence/ Bristol County	2003	2004	2005	2006	2007
Cases Filed	6,889	6,908	6,689	6,696	6,913
Cases Disposed	20,199	17,650	4,120	4,360	4,335
Trial Calendar Summary					
Cases Added	1,459	1,548	1,460	1,409	1,189
Cases Disposed	1,777	1,653	1,443	1,408	1,291
Pending at Year-End	1,634	1,567	1,428	1,573	1,559
Kent County	2003	2004	2005	2006	2007
Cases Filed	1,150	1,099	1,168	1,208	1,355
Cases Disposed	2,462	2,520	920	911	953
Trial Calendar Summary					
Cases Added	299	337	312	309	272
Cases Disposed	299	387	426	433	367
Pending at Year-End	388	337	150	132	152
Washington County	2003	2004	2005	2006	2007
Cases Filed	743	796	772	765	866
Cases Disposed	1,758	1,551	604	614	656
Trial Calendar Summary					
Cases Added	184	182	214	181	188
Cases Disposed	190	205	265	257	230
Pending at Year-End	285	248	177	147	132
Newport County	2003	2004	2005	2006	2007
Cases Filed	686	614	586	630	677
Cases Disposed	1,116	1,425	581	483	420
Trial Calendar Summary					
Cases Added	198	126	158	152	142
Cases Disposed	149	158	252	160	154
Pending at Year-End	232	206	107	123	124
Statewide	2003	2004	2005	2006	2007
Cases Filed	9,468	9,417	9,215	9,299	9,811
Cases Disposed	25,535	23,146	6,225	6,368	6,364
Trial Calendar Summary					
Cases Added	2,140	2,193	2,144	2,051	1,791
Cases Disposed	2,415	2,403	2,386	2,258	2,042
Pending at Year-End	2,539	2,358	1,862	1,975	1,967

SUPERIOR COURT MANNER OF DISPOSITION CIVIL TRIAL CALENDAR

CIVIL ACTIONS					
Providence/ Bristol County	2003	2004	2005	2006	2007
Verdicts	86	69	25	23	21
Judicial Decisions	37	50	17	7	7
Total Trials	123	119	42	30	28
Dismissed/Settled/Other Arbitration/ Other Exceptions	1,250	1,066	1,240	944	902
Total Disposed	1,777	1,653	1,443	1,408	1,291
Kent County	2003	2004	2005	2006	2007
Verdicts	10	18	14	4	4
Judicial Decisions	20	20	15	5	2
Total Trials	30	38	29	9	6
Dismissed/Settled/Other Arbitration/ Other Exceptions	205	252	359	332	255
Total Disposed	299	387	426	433	367
Washington County	2003	2004	2005	2006	2007
Verdicts	8	8	17	8	9
Judicial Decisions	6	3	6	4	6
Total Trials	14	11	23	12	15
Dismissed/Settled/Other Arbitration/ Other Exceptions	144	164	225	186	155
Total Disposed	190	205	265	257	230
Newport County	2003	2004	2005	2006	2007
Verdicts	4	2	6	11	2
Judicial Decisions	7	6	10	7	10
Total Trials	11	8	16	18	12
Dismissed/Settled/Other Arbitration/ Other Exceptions	105	114	227	116	121
Total Disposed	149	158	252	160	154
Statewide	2003	2004	2005	2006	2007
Verdicts	108	97	62	46	36
Judicial Decisions	70	79	48	23	25
Total Trials	178	176	110	69	61
Dismissed/Settled/Other Arbitration/ Other Exceptions	1,704	1,596	2,051	1,578	1,433
Total Disposed	2,415	2,403	2,386	2,258	2,042

SUPERIOR COURT FELONY CASELOAD

FELONIES					
Providence/ Bristol County	2003	2004	2005	2006	2007
Cases Filed	4,567	4,271	3,909	4,293	4,521
Cases Disposed	4,380	4,074	4,010	4,267	4,429
Total Pending Cases	1,683	1,838	1,791	1,843	1,708
% Over 180 Days Old	36%	42%	50%	43%	44%
Kent County	2003	2004	2005	2006	2007
Cases Filed	705	751	745	765	676
Cases Disposed	649	762	939	707	760
Total Pending Cases	192	193	199	254	154
% Over 180 Days Old	13%	17%	22%	34%	31%
Washington County	2003	2004	2005	2006	2007
Cases Filed	447	413	434	571	453
Cases Disposed	415	359	413	557	490
Total Pending Cases	103	135	127	126	104
% Over 180 Days Old	15%	13%	17%	27%	19%
Newport County	2003	2004	2005	2006	2007
Cases Filed	307	287	421	332	296
Cases Disposed	2247	279	347	351	275
Total Pending Cases	72	64	99	89	109
% Over 180 Days Old	35%	13%	9%	22%	18%
Statewide	2003	2004	2005	2006	2007
Cases Filed	6,026	5,722	5,509	5,961	5,946
Cases Disposed	5,691	5,474	5,709	5,882	5,954
Total Pending Cases	2,050	2,230	2,216	2,312	2,075
% Over 180 Days Old	33%	37%	44%	40%	40%

SUPERIOR COURT MANNER OF DISPOSITION FELONIES

FELONIES					
Providence/ Bristol County	2003	2004	2005	2006	2007
Pled	3,970	3,689	3,624	3,936	4,078
Filed	3	3	8	1	1
Dismissed	359	331	338	264	300
Trial	48	51	40	66	49
Other	0	0	0	0	1
Total	4,380	4,074	4,010	4,267	4,429
% Disposed of Within 180 Days of Filing	73%	69%	68%	70%	72%
Kent County	2003	2004	2005	2006	2007
Pled	537	700	679	650	713
Filed	24	21	18	17	0
Dismissed	77	35	237	33	35
Trial	11	6	5	7	11
Other	0	0	0	0	1
Total	649	762	939	707	760
% Disposed of Within 180 Days of Filing	81%	85%	66%	83%	80%
Washington County	2003	2004	2005	2006	2007
Pled	347	290	354	490	438
Filed	5	14	11	7	1
Dismissed	22	47	36	42	47
Trial	10	7	10	14	4
Other	4	1	2	4	0
Total	415	359	413	557	490
% Disposed of Within 180 Days of Filing	87%	84%	86%	82%	81%
Newport County	2003	2004	2005	2006	2007
Pled	227	223	289	298	249
Filed	3	7	10	10	6
Dismissed	15	42	42	35	18
Trial	2	7	6	7	2
Other	0	0	0	1	0
Total	247	279	347	351	275
% Disposed of Within 180 Days of Filing	86%	64%	80%	86%	77%
Statewide	2003	2004	2005	2006	2007
Pled	5,108	4,902	4,946	5,374	5,478
Filed	35	45	47	35	8
Dismissed	473	455	653	374	400
Trial	71	71	61	94	66
Other	4	1	2	5	2
Total	5,691	5,474	5,709	5,882	5,954
% Disposed of Within 180 Days of Filing	75%	72%	70%	74%	74%

SUPERIOR COURT MISDEMEANOR CASELOAD

MISDEMEANORS					
Providence/ Bristol County	2003	2004	2005	2006	2007
Cases Filed	223	135	173	155	149
Cases Disposed	157	130	117	101	93
Total Pending Cases	90	69	59	91	111
% Over 90 Days Old	70%	67%	83%	66%	74%
Kent County					
Cases Filed	40	44	47	38	56
Cases Disposed	55	45	45	52	50
Total Pending Cases	13	8	23	9	15
% Over 90 Days Old	15%	88%	52%	89%	53%
Washington County					
Cases Filed	57	49	41	47	36
Cases Disposed	90	68	53	60	30
Total Pending Cases	9	14	12	4	8
% Over 90 Days Old	56%	43%	33%	0%	13%
Newport County					
Cases Filed	237	42	13	32	46
Cases Disposed	244	64	30	25	29
Total Pending Cases	26	6	2	10	17
% Over 90 Days Old	73%	33%	0%	0%	53%
Statewide					
Cases Filed	557	270	274	272	287
Cases Disposed	546	307	245	238	202
Total Pending Cases	138	97	96	114	151
% Over 90 Days Old	65%	63%	68%	60%	66%

SUPERIOR COURT MANNER OF DISPOSITION MISDEMEANORS

MISDEMEANORS					
Providence/ Bristol County	2003	2004	2005	2006	2007
Pled	98	77	74	65	58
Filed	4	3	8	6	10
Dismissed	47	44	30	27	19
Trial	8	6	5	3	6
Other	0	0	0	0	0
Total	157	130	117	101	93
% Disposed of Within 90 Days of Filing	56%	34%	28%	24%	19%
Kent County					
Pled	23	25	21	32	34
Filed	9	6	7	11	1
Dismissed	17	9	17	7	12
Trial	2	3	0	1	2
Other	4	2	0	1	1
Total	55	45	45	52	50
% Disposed of Within 90 Days of Filing	65%	94%	47%	67%	73%
Washington County					
Pled	54	39	37	33	23
Filed	13	10	3	9	0
Dismissed	18	17	10	16	6
Trial	2	1	2	0	0
Other	3	1	1	2	1
Total	90	68	53	60	30
% Disposed of Within 90 Days of Filing	82%	82%	81%	81%	90%
Newport County					
Pled	133	26	11	7	12
Filed	70	9	4	2	2
Dismissed	39	29	14	13	9
Trial	0	0	1	0	2
Other	2	0	0	3	4
Total	244	64	30	25	29
% Disposed of Within 90 Days of Filing	81%	56%	33%	85%	89%
Statewide					
Pled	308	167	143	137	127
Filed	96	28	22	28	13
Dismissed	121	99	71	63	46
Trial	12	10	8	4	10
Other	9	3	1	6	6
Total	546	307	245	238	202
% Disposed of Within 90 Days of Filing	70%	63%	41%	50%	47%

FAMILY COURT DOMESTIC RELATIONS

DOMESTIC					
Providence/ Bristol County	2003	2004	2005	2006	2007
Filed	3,120	3,158	3,096	3,062	2,935
Filed-Divorce Only	2,711	2,694	2,630	2,558	2,479
Disposed	2,783	2,789	2,761	2,457	2,542
Cases Greater than 360 Days Old	11	4	3	19	15
Kent County	2003	2004	2005	2006	2007
Filed	810	821	805	763	761
Filed-Divorce Only	731	727	714	678	666
Disposed	693	730	729	735	710
Cases Greater than 360 Days Old	12	10	7	10	0
Washington County	2003	2004	2005	2006	2007
Filed	539	555	561	577	505
Filed-Divorce Only	473	488	483	509	444
Disposed	458	510	549	460	480
Cases Greater than 360 Days Old	20	2	0	0	0
Newport County	2003	2004	2005	2006	2007
Filed	380	381	329	377	348
Filed-Divorce Only	325	326	263	316	289
Disposed	307	317	292	315	271
Cases Greater than 360 Days Old	25	3	10	8	9
Statewide	2003	2004	2005	2006	2007
Filed	4,849	4,915	4,791	4,779	4,549
Filed-Divorce Only	4,240	4,235	4,090	4,061	3,878
Disposed	4,241	4,346	4,331	3,967	4,003
Cases Greater than 360 Days Old	68	19	20	37	24
Abuse Complaint Filed	2003	2004	2005	2006	2007
Providence/Bristol County	1,849	1,933	1,736	1,806	1,669
Kent County	298	393	316	328	373
Washington County	134	120	112	88	94
Newport County	124	127	77	86	97
Statewide Total	2,405	2,573	2,241	2,308	2,233
Support Petitions Filed	2003	2004	2005	2006	2007
Support Petitions Filed	4,801	3,602	4,551	5,307	5,442

FAMILY COURT JUVENILE CASELOAD

JUVENILE FILINGS BY CATEGORY					
	2003	2004	2005	2006	2007
Wayward/Delinquent	7,415	7,331	7,018	7,125	6,527
Dependency/Neglect/ Abuse	1,661	1,720	2,162	2,590	1,692
Termination of Parental Rights	365	393	424	348	371
Adoption/Guardianship	599	610	599	541	484
Violations	960	897	938	1,045	1,130
Other	50	80	68	74	60
Total Filings	11,050	11,031	11,209	11,723	10,264

JUVENILE CALENDAR RESULTS FOR WAYWARD/DELINQUENT CASES					
Providence/ Bristol County	2003	2004	2005	2006	2007
Filed	5,852	5,717	5,537	5,706	5,517
Disposed	5,891	5,957	5,141	5,378	5,585
% Adjudicated Within 180 Days of Filing	63%	74%	75%	75%	74%
Kent County					
Filed	1,312	1,449	1,289	1,241	1,149
Disposed	1,246	1,402	1,175	1,303	1,247
% Adjudicated Within 180 Days of Filing	52%	56%	57%	57%	65%
Washington County					
Filed	698	632	728	708	561
Disposed	742	685	588	689	623
% Adjudicated Within 180 Days of Filing	61%	63%	76%	76%	66%
Newport County					
Filed	513	430	402	515	430
Disposed	543	464	407	443	480
% Adjudicated Within 180 Days of Filing	56%	65%	61%	69%	63%
Statewide					
Filed	8,375	8,228	7,956	8,170	7,657
Disposed	8,422	8,508	7,311	7,813	7,935
% Adjudicated Within 180 Days of Filing	60%	70%	72%	72%	71%

FAMILY COURT CHILD PROTECTION

JUVENILE CALENDAR RESULTS FOR CHILD PROTECTION CASES

Providence/ Bristol County	2003	2004	2005	2006	2007
TERMINATION OF PARENTAL RIGHTS					
Filed	268	329	338	273	290
Disposed	308	300	269	296	344
% Adjudicated Within 180 Days of Filing	64%	80%	68%	67%	53%
DEPENDENCY/NEGLECT/ ABUSE					
Filed	1,310	1,305	1,626	1,915	1,250
Disposed	1,189	1,280	1,311	1,704	1,711
% Adjudicated Within 180 Days of Filing	72%	66%	59%	52%	39%
OTHER					
Filed	468	490	441	404	389
Disposed	460	422	373	431	373

Kent County	2003	2004	2005	2006	2007
TERMINATION OF PARENTAL RIGHTS					
Filed	36	29	48	39	50
Disposed	27	40	36	51	28
% Adjudicated Within 180 Days of Filing	63%	27%	31%	24%	59%
DEPENDENCY/NEGLECT/ ABUSE					
Filed	186	177	284	352	243
Disposed	218	236	254	337	263
% Adjudicated Within 180 Days of Filing	35%	51%	57%	51%	57%
OTHER					
Filed	84	112	108	105	81
Disposed	74	87	116	97	83

Washington County	2003	2004	2005	2006	2007
TERMINATION OF PARENTAL RIGHTS					
Filed	37	14	15	16	12
Disposed	20	21	25	14	10
% Adjudicated Within 180 Days of Filing	59%	36%	33%	80%	33%
DEPENDENCY/NEGLECT/ ABUSE					
Filed	100	106	115	193	132
Disposed	118	145	112	164	161
% Adjudicated Within 180 Days of Filing	47%	51%	49%	62%	39%
OTHER					
Filed	57	58	74	64	48
Disposed	47	57	67	68	38

Newport County	2003	2004	2005	2006	2007
TERMINATION OF PARENTAL RIGHTS					
Filed	24	21	23	20	19
Disposed	21	13	16	17	19
% Adjudicated Within 180 Days of Filing	61%	50%	56%	57%	46%
DEPENDENCY/NEGLECT/ ABUSE					
Filed	65	132	137	130	67
Disposed	77	96	108	115	96
% Adjudicated Within 180 Days of Filing	6%	66%	54%	40%	21%
OTHER					
Filed	40	30	44	42	26
Disposed	37	34	32	46	22

Statewide	2003	2004	2005	2006	2007
TERMINATION OF PARENTAL RIGHTS					
Filed	365	393	424	348	371
Disposed	376	374	346	378	401
% Adjudicated Within 180 Days of Filing	*	72%	60%	58%	52%
DEPENDENCY/NEGLECT/ ABUSE					
Filed	1,661	1,720	2,162	2,590	1,692
Disposed	1,602	1,757	1,785	2,320	2,231
% Adjudicated Within 180 Days of Filing	*	63%	58%	52%	41%
OTHER					
Filed	649	690	667	615	544
Disposed	618	600	588	642	516

* not available.

DISTRICT COURT SMALL CLAIMS

Second Division Newport County	2003	2004	2005	2006	2007
Cases Filed	879	833	895	808	831
Cases Disposed	715	851	1,933	1,420	1,115
Third Division Kent County	2003	2004	2005	2006	2007
Cases Filed	1,990	2,107	2,459	3,133	6,335
Cases Disposed	2,889	3,154	2,532	4,686	5,675
Fourth Division Washington County	2003	2004	2005	2006	2007
Cases Filed	1,430	1,103	1,094	1,152	1,335
Cases Disposed	1,735	1,719	1,787	1,563	1,815
Sixth Division Providence/ Bristol County	2003	2004	2005	2006	2007
Cases Filed	11,205	11,689	12,133	13,417	10,929
Cases Disposed	13,119	13,724	15,250	12,706	10,907
Statewide	2003	2004	2005	2006	2007
Cases Filed	15,504	15,732	16,581	18,510	19,430
Cases Disposed	18,458	19,448	21,502	20,375	19,512

DISTRICT COURT CIVIL CASELOAD

Second Division Newport County	2003	2004	2005	2006	2007
Cases Filed	1,173	1,193	1,367	1,150	1,316
Cases Disposed	1,535	1,516	1,632	1,427	1,299
Third Division Kent County	2003	2004	2005	2006	2007
Cases Filed	2,595	2,454	2,343	3,018	4,917
Cases Disposed	3,456	4,287	4,226	4,539	5,385
Fourth Division Washington County	2003	2004	2005	2006	2007
Cases Filed	1,246	1,204	1,116	1,258	1,631
Cases Disposed	1,233	1,624	1,355	1,382	1,391
Sixth Division Providence/ Bristol County	2003	2004	2005	2006	2007
Cases Filed	13,363	13,510	13,604	13,674	14,414
Cases Disposed	12,224	12,728	14,010	15,945	11,126
Statewide	2003	2004	2005	2006	2007
Cases Filed	18,377	18,361	18,430	19,100	22,278
Cases Disposed	18,448	20,155	21,223	23,293	19,201

MANNER OF DISPOSITION

	2003	2004	2005	2006	2007
Defaults	9,382	10,306	11,008	10,275	10,802
Settlements	7,013	6,901	7,448	6,535	5,462
Judgments	2,063	2,241	3,046	3,565	3,248
Total	18,458	19,448	21,502	20,375	19,512

MANNER OF DISPOSITION

	2003	2004	2005	2006	2007
Defaults	7,171	9,640	8,375	9,045	9,812
Settlements	6,264	5,394	7,076	8,454	3,226
Judgments	5,012	5,120	5,762	5,790	6,160
Other	1	1	10	4	3
Total	18,448	20,155	21,223	23,293	19,201

CASES FILED-OTHER CATEGORIES

	2003	2004	2005	2006	2007
Domestic Abuse	926	765	734	741	746
Administrative Appeals	140	141	130	132	182
Mental Health Hearings	456	601	555	586	566

DISTRICT COURT CRIMINAL CASELOAD

MISDEMEANORS					
Second Division Newport County	2003	2004	2005	2006	2007
Cases Filed	2,276	2,518	2,515	2,470	2,542
Cases Disposed	2,229	2,359	2,311	2,401	2,376
Total Pending	152	339	510	216	312
% Over 60 Days Old	41%	57%	69%	41%	54%
Third Division Kent County	2003	2004	2005	2006	2007
Cases Filed	4,893	4,911	5,369	5,600	7,468
Cases Disposed	4,708	4,633	4,986	4,970	7,019
Total Pending	351	513	725	1,188	1,329
% Over 60 Days Old	32%	47%	53%	56%	59%
Fourth Division Washington County	2003	2004	2005	2006	2007
Cases Filed	4,222	4,296	4,327	4,131	3,923
Cases Disposed	3,940	4,127	4,150	3,971	3,790
Total Pending	450	334	339	310	397
% Over 60 Days Old	39%	19%	41%	21%	32%
Sixth Division Providence/ Bristol County	2003	2004	2005	2006	2007
Cases Filed	17,827	18,277	18,357	17,747	15,674
Cases Disposed	17,578	17,618	17,029	16,332	14,968
Total Pending	1,037	1,043	1,462	1,641	1,498
% Over 60 Days Old	28%	25%	39%	54%	48%
Statewide	2003	2004	2005	2006	2007
Cases Filed	29,218	30,002	30,568	29,948	29,607
Cases Disposed	28,455	28,737	28,476	27,674	28,153
Total Pending	1,990	2,229	3,036	3,355	3,536
% Over 60 Days Old	32%	34%	48%	51%	51%

MANNER OF DISPOSITION

	2003	2004	2005	2006	2007
Pled	21,643	21,911	21,040	20,492	19,704
Filed	80	80	59	57	56
Dismissed	5,819	6,289	6,624	6,675	6,400
Trials	288	239	557	243	206
Other	625	218	196	207	1,787
Total	28,455	28,737	28,476	27,674	28,153

STATEWIDE FELONIES

	2003	2004	2005	2006	2007
Filed	7,428	7,170	7,403	8,037	7,616

WORKERS' COMPENSTION COURT MANNER/STAGE OF DISPOSITION

PRETRIAL	2003	2004	2005	2006	2007
Pretrial Order	3,129	3,214	3,147	3,264	3,016
Order	7	10	6	7	9
Decree	63	60	103	95	120
Consent Decree	84	69	69	132	227
Major Surgery	2	0	0	0	0
Withdrawn	2,716	2,720	2,644	2,555	2,646
Discontinued	11	7	18	3	8
Dismissed	38	18	74	68	67
Other	101	84	0	0	0
Total	6,151	6,182	6,061	6,124	6,093
TRIAL	2003	2004	2005	2006	2007
Decision	569	540	1302	1259	1220
Consent Decree	189	203	173	199	141
Trial Claim Withdrawn	676	589	694	688	615
Petition Withdrawn	90	91	128	104	119
Order	34	18	30	13	15
Dismissed	11	18	25	17	12
Discontinued	5	4	2	2	0
Other	927	690	21	22	30
Total	2,501	2,153	2,375	2,304	2,152
Appeals	2003	2004	2005	2006	2007
Appeals	123	94	56	51	31
Total Dispositions	8,775	8,429	8,492	8,479	8,276

WORKERS' COMPENSTION COURT CASELOAD SUMMARY

EMPLOYEE PETITIONS	2003	2004	2005	2006	2007
Original	3,027	2,899	2,783	2,654	2,586
To Review	2,171	2,165	1,951	1,857	1,763
Second Injury	0	0	1	1	0
To Enforce	873	983	799	976	838
Total	6,071	6,047	5,534	5,488	5,187
EMPLOYER PETITIONS	2003	2004	2005	2006	2007
To Review	1,568	1,646	1,629	1,608	1,543
OTHER	2003	2004	2005	2006	2007
Lump Sum Settlement	780	669	763	827	842
Hospital/Physician Fees	161	66	131	164	172
Miscellaneous	104	136	177	287	306
Total	1,045	871	1,071	1,278	1,320
	2003	2004	2005	2006	2007
Total Petitions	8,684	8,564	8,234	8,374	8,050
Total Dispositions	8,775	8,429	8,492	8,479	8,276
Total Pending Caseload	2,233	2,374	2,141	2,027	1,797
Total Cases Pending Trial	1887	995	1030	926	785
% Pending Trial					
More Than 270 Days	29%	32%	37%	36%	34%

RHODE ISLAND TRAFFIC TRIBUNAL (RITT) CASELOAD

	2003	2004	2005	2006	2007
Total Summonses Issued*	187,429	203,207	220,338	232,176	224,569
RITT Summonses Issued	101,649	104,667	117,046	115,848	104,288
Total Violations	124,618	130,093	142,365	140,107	126,828
RITT Summonses Disposed	106,371	109,808	118,876	117,319	108,216

BREAKDOWN OF DISPOSED SUMMONSES

	2003	2004	2005	2006	2007
Court Hearings	67,243	69,293	72,111	72,019	68,092
Pay by Mail	39,128	40,515	46,765	45,300	40,124
Total	106,371	109,808	118,876	117,319	108,216
% Disposed of Within 60 Days	98%	98%	98%	97%	97%

BREATHALYZER REFUSALS

	2003	2004	2005	2006	2007
Filed	1,587	1,870	1,844	1,670	1,838
Disposed	1,605	1,924	1,847	1,737	1,848
% Disposed of Within 60 Days	91%	91%	89%	88%	84%

DUI/ .08

	2003	2004	2005	2006	2007
Filed	27	4	0	1	0
Disposed	33	4	0	1	0
% Disposed of Within 60 Days	79%	100%	**	100%	**

INSURANCE

	2003	2004	2005	2006	2007
Filed	10,940	11,516	11,026	9,871	8,462
Disposed	11,572	12,384	11,446	10,294	8,925
% Disposed of Within 60 Days	94%	93%	95%	94%	93%

APPEALS

	2003	2004	2005	2006	2007
Filed	700	626	673	559	692
Disposed	507	433	458	385	330
Pending	59	67	50	54	162

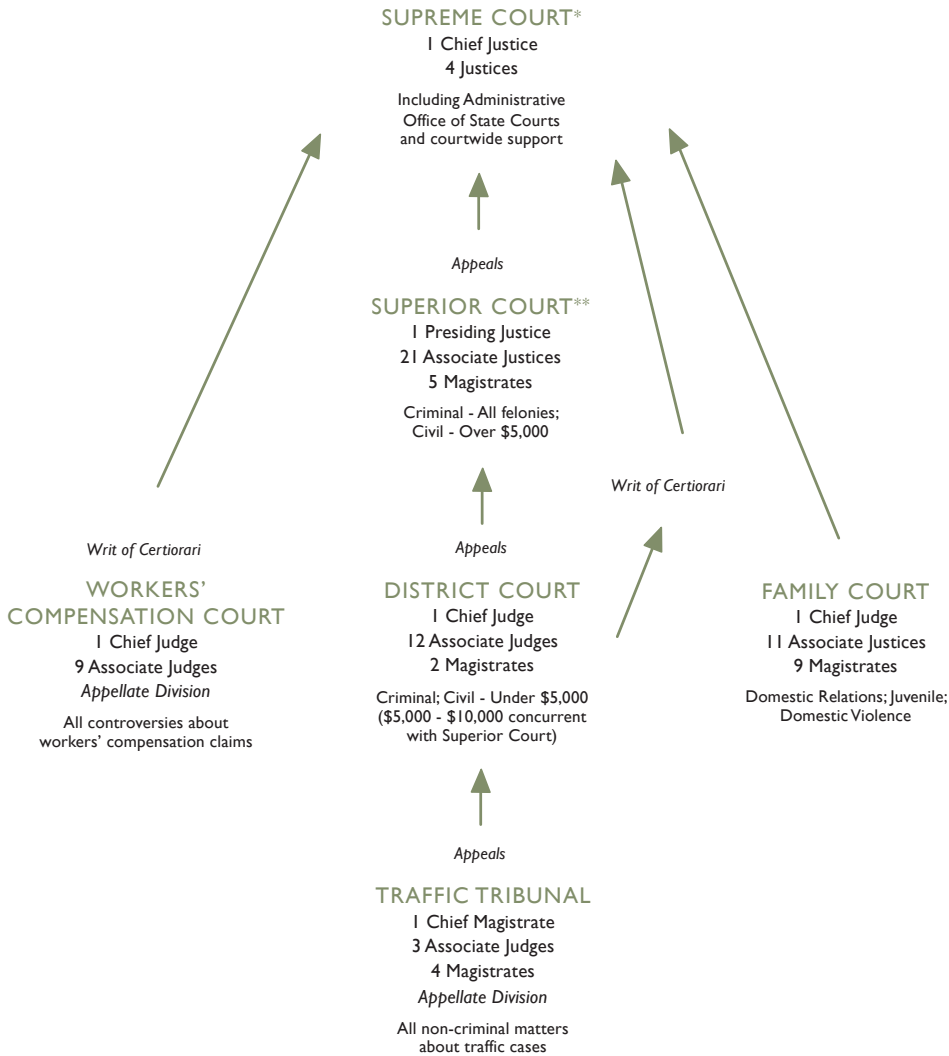
* includes summonses for both RITT and municipal courts.

** not available.

Rhode Island Court Structure

ADMINISTRATIVE OFFICE OF STATE COURTS

State Court Administrator • Finance and Budget • Employee Relations
 State Law Library • Judicial Technology Center • Facilities and Operations/Security
 Judicial Records Center • Domestic Violence Training and Monitoring Unit
 Mandatory Continuing Legal Education • Community Outreach and Public Relations
 Law Clerk Department • Judicial Planning • General Counsel and Alternative Dispute Resolution
 Disciplinary Counsel • Supreme Court Clerk's Office • Appellate Screening
 Administrative Assistant to Chief Justice • Interpreters' Office



* Court of last resort
 ** Court of general jurisdiction
 All other courts have limited jurisdiction



250 Benefit Street
Providence, Rhode Island 02903
(401) 222-3266
www.courts.ri.gov