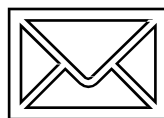


RHODE ISLAND SUPERIOR COURT

Jury Trial Protocols

Effective September 1, 2022



SUMMONSES

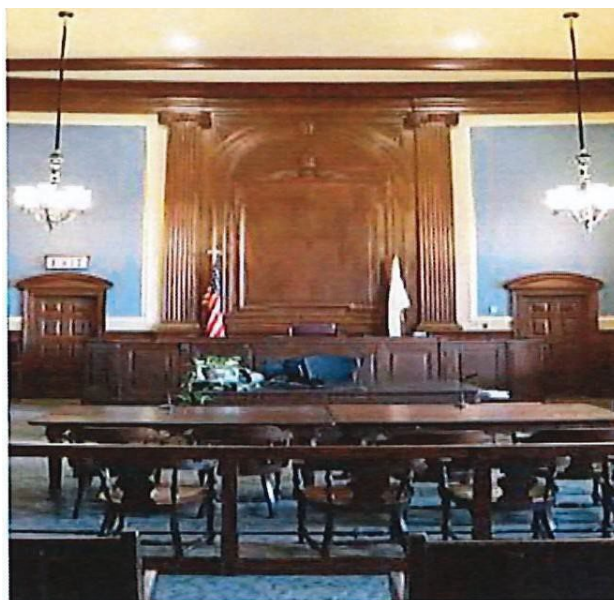
JURY TRIAL PROCESS

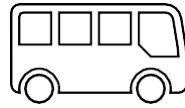
In Providence County, summonses are issued approximately three (3) weeks in advance of the juror's report date.

In Kent, Newport, and Washington Counties, summonses are issued approximately two (2) weeks in advance.

A criminal jury trial will require a jury pool of 45 to 50 jurors; a civil jury trial will require a jury pool of 35 to 40 jurors unless otherwise adjusted per request of the sitting judge.

The Office of the Jury Commissioner will communicate via letter, along with the juror summons. Call-in numbers have been established for prospective jurors to contact the Jury Commissioner if they are unable to report. The telephone number for Providence County is (401) 222-5879, and the telephone number for Kent, Newport, and Washington Counties is (401) 822-6865.





TRANSPORTATION

JURY TRIAL PROCESS

For Providence County jurors, a shuttle from a Providence location to the Benefit Street entrance of the Licht Judicial Complex will run from 7:30 a.m. to 8:45 a.m. each morning.

Shuttle service is available throughout the day. Jurors will be dropped off and picked up at the Benefit Street entrance to the Licht Judicial Complex except for jurors who are unable to take stairs.

Jurors may drive or take public transportation to the courthouse and may enter the building on the South Main Street or Benefit Street entrance.

Jurors summonsed to the Kent, Washington, or Newport County courthouses may drive themselves or take public transportation.





REPORTING TO THE COURTHOUSE

JURY TRIAL PROCESS

In Providence County, jurors report to the jury lounge on the fourth floor or may be directed to a specific courtroom of the Licht Judicial Complex where they show photo identification, turn in their summons, and receive a badge and book.

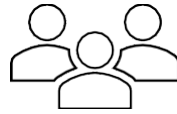
At 9:00 a.m., jurors will report to courtroom 11 and/or courtroom 12 to watch the juror video. After viewing the juror video, a judicial officer welcomes the jurors and qualifies them for service.

Jury Commissioner staff will assist jurors with entering and seating in the courtroom.

For jury selection in Kent, Newport, and Washington Counties, jurors shall report to the courthouse designated in their summons.

In Kent and Washington Counties, the jury lounge is located on the first floor. In Newport County, the jury lounge is located on the third floor.





JURY SELECTION

JURY TRIAL PROCESS

The hours of operation are 8:30 a.m. to 4:00 p.m. The judicial officer will set the schedule during the trial.

All jurors sit in the gallery during jury selection.

During breaks in the proceedings, jurors return to the jury lounge. Jurors have access to a microwave, refrigerator, and vending machines. Jurors may leave the building, eat in the deliberation room, or eat in the jury lounge.

After the jury is selected, those not selected return to the jury lounge to be excused.

Each juror turns in his/her badge and is issued a work voucher.





JURY TRIAL

JURY TRIAL PROCESS

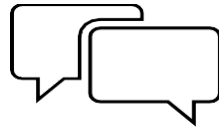
In a criminal jury trial, twelve (12) jurors and two (2) alternates are selected. In a civil jury trial, six (6) jurors and two (2) alternates are selected though judicial officers may opt to have additional alternates selected.

Masks are not required in Rhode Island courthouses. Depending on circumstances, the trial judge may require masks for some or all of a trial.

During breaks in the proceedings, jurors return to the juror lounge or as may be directed by the sitting judge.

Media members may be given in-court access during the trial phase. Members of the media must comply with the media guidelines set forth in Supreme Court Executive Order 2020-12.





DELIBERATIONS

JURY TRIAL PROCESS

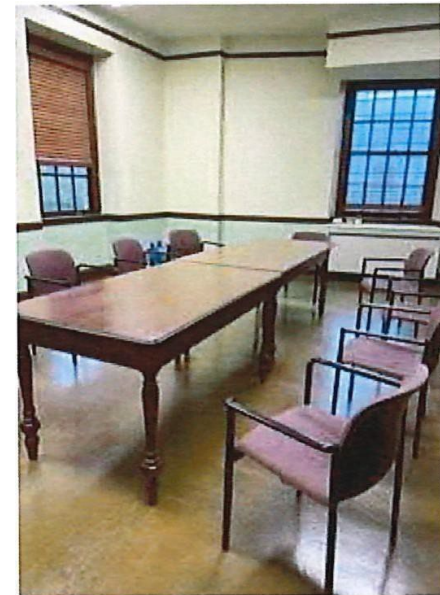
Each courtroom has its own deliberation room.

Sheriffs are assigned to sit by the deliberation room during deliberations.

When the trial has concluded, the judicial officer may address the jurors in the deliberation room and then they are excused and sent to the jury lounge.

In the jury lounge, each juror turns in his/her badge and is given a work voucher and evaluation form.

Jurors are then excused from service.



FOR MORE INFORMATION PLEASE CONTACT

**Office of the Jury Commissioner
(401) 222-5879**